



Stormwater treatment units

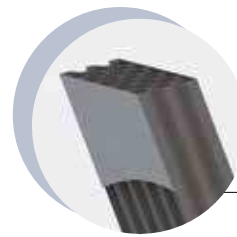
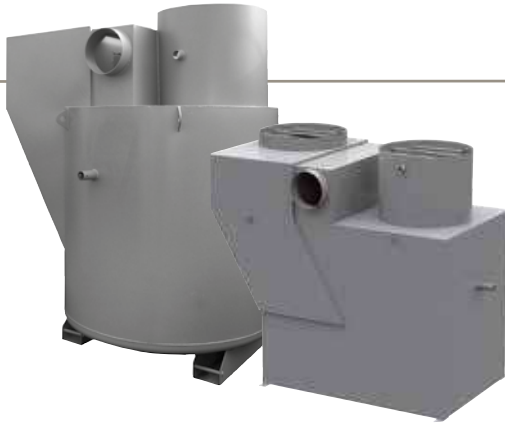
Vertical without by-pass / from 0.04 to 0.3 ha

HL 2 m/h
 Sizes 0.04 to 0.3 ha

- Steel tank with hoisting rings.
- Bi-component coating based on polyamid adduct/epoxy resins.
- Tubular Cluster **Alvéau**®
- 2 cylindrical manholes without cover
- Flat or dished bottom according to models and treated area.
- Efficiency of treatment > 75%.

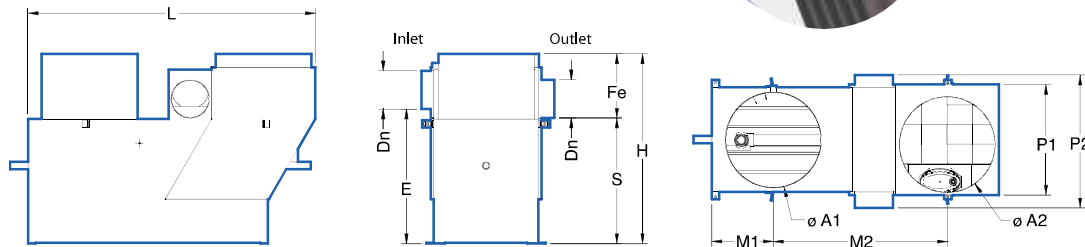
OPTIONS

- **Visual and audible alarm** see p. 83
- **Emptying column** see p. 86
- **Obturator closure device** see p. 86
- **Safety grid (s)** see p. 85

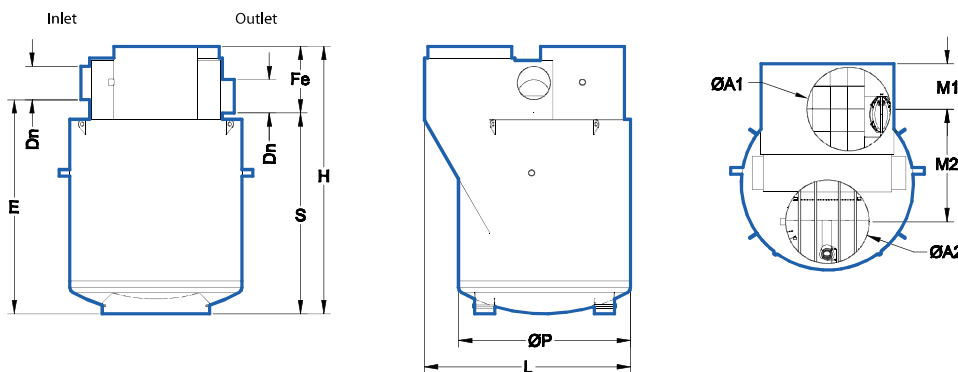


Techneau
new
 innovation

Alvéau® removable tubular cluster in PVC with inclination 60° to settle suspended matter



Ref Range NV	P1	P2	L	Dn	E	S	Fe	H	M1	M2	ø A1	ø A2	Weight	Storage volume			Net volume	total volume
														Sand	Sludge	Light liquids		
NV004EA	685	880	1875	100	1073	1006	434	1448	320	1239	580	580	266	80	236	293	1308	1542
NV008EA	900	1080	2335	150	1098	1014	530	1544	500	1414	780	780	384	160	355	497	2223	2729
NV012EA	1260	1430	2135		1119		580	1594	400	1313	780	780	464	240	403	630	2887	3441
NV016EA			2241		1642		1514	2094	500	1320	780	780	563	320	954			



Ref Range NV	ø P	L	Dn	E	S	Fe	H	M1	M2	ø A1	ø A2	Weight	Storage volume			Net volume	Total volume
													Sand	Sludge	Light Liquids		
NV020EA	1600	1916	200	1993	1847	630	2487	421	1047	780	780	659	400	1301	603	3734	4336
NV030EA	1900	2282		2025	1872		2512	630	1256			950	745	600	1934	851	5336

For upper sizes, please ask our design office
 Size is given in hectares, dimensions are given in mm, weight in kg



Stormwater treatment units

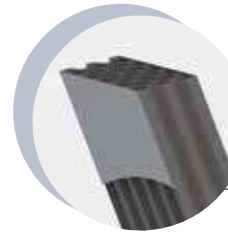
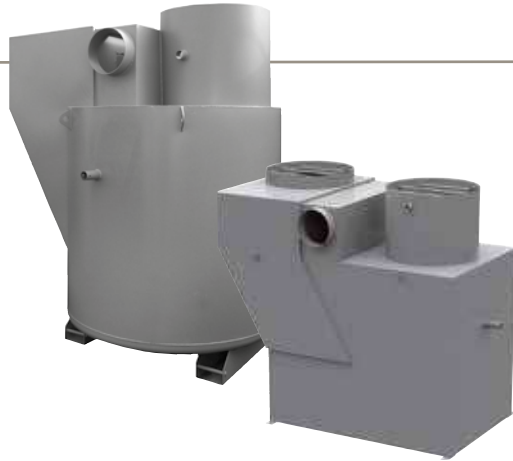
Vertical with by-pass / from 0.04 to 0.3 ha

HL 2 m/h
Sizes 0.04 to 0.3 ha

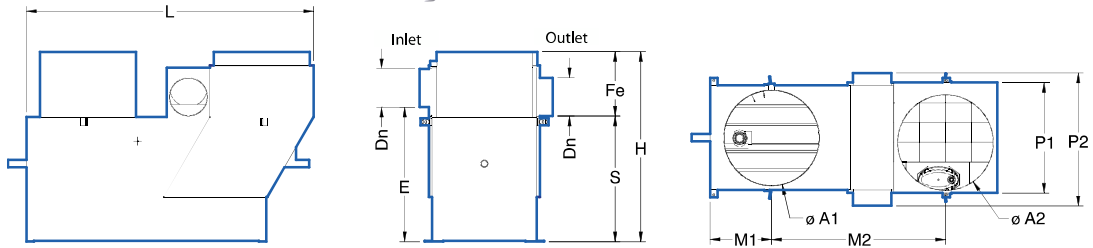
- Steel tank with hoisting rings.
- Bi-component coating based on polyamid adduct/epoxy resins.
- Tubular Cluster **Alvéau®**
- 2 cylindrical manholes without cover
- Integrated by-pass
- Flat or dished bottom according to models and treated area.
- Efficiency of treatment > 75%.

OPTIONS

- **Visual and audible alarm** see p. 83
- **Emptying column** see p. 86
- **Obturator closure device** see p. 86
- **Safety grid (s)** see p. 85

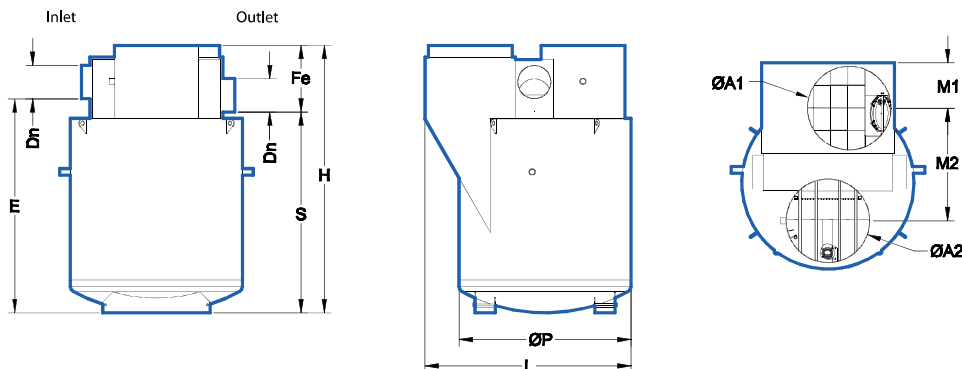


Alvéau® removable tubular cluster in PVC with inclination 60° to settle suspended matter



NVB

Ref Range NVB	P1	P2	L	Dn	E	S	Fe	H	M1	M2	ø A1	ø A2	Weight	Storage volume			Net volume	Total volume
														Sand	Sludge	Light liquids		
NVB004EA	685	880	1875	200	1073	1015	434	1448	320	1239	580	580	273	80	236	293	1307	1541
NVB008EA	900	1080	2335	300	1090	1017	530	1544	500	1414	780	780	394	160	355	497	2207	2721
NVB012EA	1260	1430	2135	300	1111	1020	580	1594	400	1313	780	780	474	240	403	630	2867	3429
NVB016EA	1260	1430	2241	300	1634	1525	580	2094	500	1320	780	780	575	320	954	630	3698	4260



Ref Range NVB	øP	L	Dn	E	S	Fe	H	M1	M2	ø A1	ø A2	Weight	Storage volume			Net volume	Total volume
													Sand	Sludge	Light liquids		
NVB020EA	1600	1916	300	1993	1870	630	2487	421	1047	780	780	589	400	1301	603	3734	4336
NVB030EA	1900	2282	300	2023	1887	630	2512	630	1256	780	950	755	600	1934	851	5336	5938

For upper sizes, please ask our design office
Size is given in hectares, dimensions are given in mm, weight in kg



Stormwater treatment units

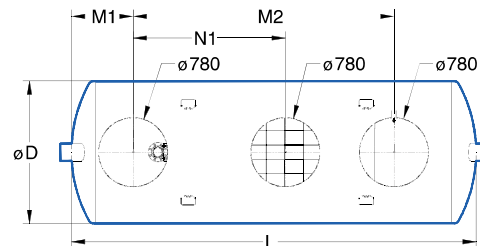
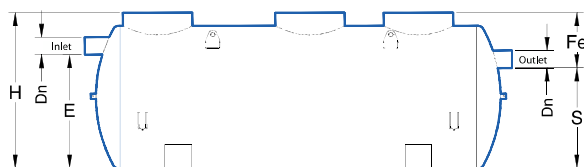
Horizontal without by-pass / from 0.3 to 1 ha

HL 2 m/h
Sizes 0.3 to 1 ha

- Steel tank with hoisting rings.
- Bi-component coating based on polyamid adduct/epoxy resins.
- Tubular Cluster **Alvéau**®
- Emptying column DN 100
- Hydraulic load 2 m/h
- Until 4 cylindrical manholes without cover
- Efficiency of treatment > 75%.
- Polyester production: please ask us.

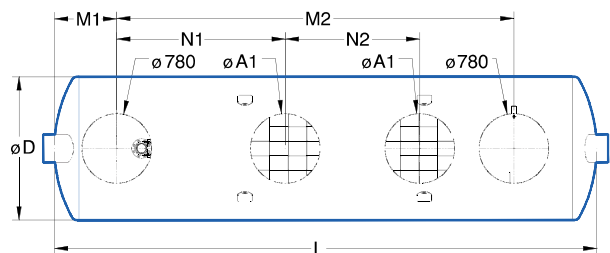
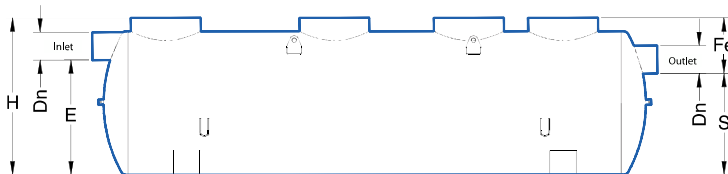
OPTIONS

- **Visual and audible alarm** see p. 83
- **Safety grid (s)** see p. 85
- **Chassis speed** see p. 84



Alvéau® removable tubular cluster in PVC with inclination 60° to settle suspended matter.

Ref Range NH	Ø D	L	Dn	E	S	Fe	H	M1	M2	N1	Weight	Storage volume			Net volume	Total volume
												Sand	Sludge	Light liquids		
NH030EA	1600	4547	200	1235	1105	645	1750	693	2930	1710	976	1005	1067	751	6291	8539



Ref Range NH	Ø D	L	Dn	E	S	Fe	H	M1	M2	N1	N2	ø A1	Weight	Storage volume			Net volume	Total volume
														Sand	Sludge	Light liquids		
NH040EA	1600	5047	200	1235	1105	645	1750	693	3430	1110	1100	780	1080	1005	1265	805	7031	9544
NH050EA	1600	5547	200	1235	1105	645	1750	693	3930	1360	1350	780	1188	1005	1561	722	7772	10550
NH060EA	1600	6047	315	1206	1105	645	1750	693	4530	1880	1500	780	1302	1206	1858	640	8513	11555
NH070EA	1600	7047	315	1206	1105	645	1750	693	5430	2180	2000	780	1476	1407	2155	787	9994	13566
NH090EA	1900	6145	315	1506	1336	714	2050	823	4450	1800	1500	950	1989	1843	2899	778	12452	16572
NH100EA	1900	6645	315	1506	1336	714	2050	823	4950	1900	1800	950	2136	2056	3199	853	13517	17990

For upper sizes, please ask our design office

Size is given in hectares, dimensions are given in mm, weight in kg

For larger surface areas, ask our engineering design office.