



2016 Range

Grease  
separators



## Grease separators

### Grease separators or grease and starch separators:

The challenges of treatment \_\_\_\_\_ p. 58

Regulations \_\_\_\_\_ p. 59

How to choose \_\_\_\_\_ p. 60-61

Grease separators with:

• **sludge trap**, polyethylene \_\_\_\_\_ p. 62-63

• **sludge trap**, stainless steel \_\_\_\_\_ p. 64

• **sludge trap + emptying column**,  
polyethylene \_\_\_\_\_ p. 65-66

• **sludge trap + emptying column**,  
stainless steel \_\_\_\_\_ p. 67

• **without sludge trap**, polyethylene \_\_\_\_\_ p. 68-69

Grease and starch separators with:

• **sludge trap**, polyethylene \_\_\_\_\_ p. 70

• **sludge trap + emptying column**, polyethylene \_\_\_\_\_ p. 71

• **with or without emptying column**, polyethylene \_\_\_\_\_ p. 72

Grease separators:

• **above-ground separator**, stainless steel \_\_\_\_\_ p. 73

Mini grease separator:

connection under sink \_\_\_\_\_ p. 74-75



# Grease and starch separators: the challenges of treatment

## 1 - Introduction

Waste water from food preparation contains greases and oils of animal or vegetable origin. They are also the cause of heavy deposits in sewers. These deposits disturb the proper operation of the waste water collection networks and treatment plants and generate high maintenance costs for authorities.

Grease deposits are the cause of:

- **clogging and/or plugging off of sewer pipes** (this can represent 30 to 50% of interventions).
- **Difficulties in grease treatment by sewage plants leading to cost increases:** greases are poorly biodegradable and generate additional chemical oxygen demand. This requires increased ventilation of wastewater treatment lagoon entailing additional operating costs,
- **Nauseating odours as well as toxic gases and pipeline corrosion:** grease build-up in the sewers create conditions conducive to fermentation and emission of toxic gases including hydrogen sulphide.
- **Imbalance of aquatic fauna and flora:** greases discharged into the natural environment cause an additional consumption of oxygen dissolved in water generating an imbalance in fauna and flora and contribution to the development of filamentous algae.

A grease separator collects solid waste and grease before entering the sewers and thus any water pollution and damage of public wastewater treatment system is avoided.

A study carried out by CNIDEP in 2007 highlighted that "in the case of slaughterhouses, catering companies, restaurants, food-processing companies, 95% of the greases contained in effluents resulting from manufacturing originated in 4 processes:

- water cooking (54%), cooling, (4%), hand dish-washing (30%) and machine dish-washing (7%)

## 2 - Regulations

Article L 1331 10 of the new French Public Health Code provides that:

*"Any discharge of wastewater other than domestic in the public sewage system shall be previously authorized by the local authority to which the pipe work collecting this water belongs."*

The clean water regulation and regional healthcare regulation should provide the rules for greasy waste management, namely the installation of a pre-treatment device. This requirement is increasingly imposed by municipal bylaws.





# Grease and starch separators: regulations

## 2.1 - Standards

Grease separators manufacturing is governed by various standards, notably the French standard NF EN 1825-1, supplemented by the NF P 16-500-1/CN and NF EN 1825-2 standard. The separators are subject to CE Marking according to procedures laid down in annex ZA.

As of July 1, 2013, the DOP is compulsory. Every product shall be accompanied by its DOP including the CE marking as well.

## 2.2 - Determination of nominal size (for NS $\geq 2$ )

### A – Sludge trap

The volume of sludge traps shall be **at least** **100 x NS** in litres

### B – Separation chamber

Nominal size NS	Minimum surface of grease separation zone m <sup>2</sup>	Minimum volume of grease separation zone m <sup>3</sup>	Minimum volume of grease collection area m <sup>3</sup>
TN	0,25 x TN	0,24 x TN	0,04 x TN

The volume of separation chamber can also be calculated as follows

$$\text{Useful volume (litres)} = 240 \times \text{NS}$$

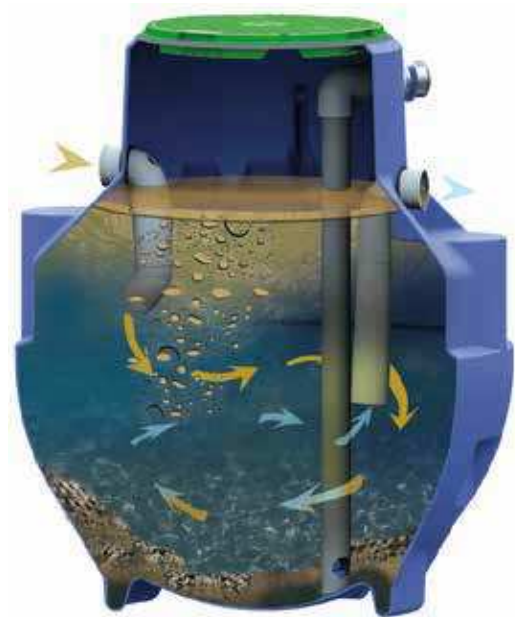
## 3 - Hydro-flow

Waste water from food industries and/or restaurants contains greases which built-up have a PH between 1 and 3. They produce acids which damage epoxy based organic coatings.

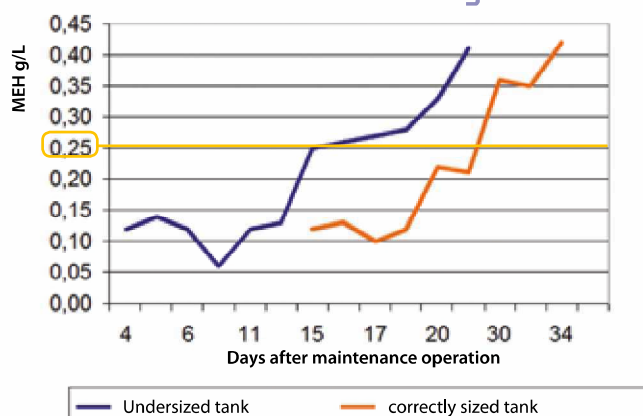
That is why Techneau uses materials insensitive to corrosion to produce grease separators.

According to the specific constraints of the jobsite, the grease separator will be made of:

**Rotomoulded polyethylene OR polyester OR stainless steel**  
(304L or 316L stainless steel)



Evolution of discharges



**Choosing the right size of a grease and starch separator is essential**

An undersized separator will generate discharge values higher than 250 mg/l after 16 operating days only.



# Grease separators with sludge trap: What size to choose?

## 2.1 - Calculation method according to NF EN 1825-2 standard

For the size of grease separators with sludge trap and grease & starch separators, the calculation method according to NF EN 1825-2 standard is the following:

$$NS = \text{Number of meals} \times V_{\text{meals}} \times fd \times ft \times fr \times \frac{fq}{(3600 \times \text{daily operating time})}$$

fd: density factor; ft: temperature factor; fr: cleansing agent factor; fq: peak factor

## 2.2 - Determinant factors according to NF EN 1825-2

Factors	Restaurant			Hospital	Canteen (no food preparation)
	1 service	2 services	Hotel and restaurant		
Daily operation time (h)	8	16	16	16	8
Temperature factor (1: T°C < 60°C) (ft)	1	1	1	1	1
Cleansing agent factor/ 1,3 Presence of cleansing agents (fr)	1,3	1,3	1,3	1,5	1,3
Peak factor (fq)	8,5	8,5	5	13	20
Base V / meal (litres)	50	50	100	20	5

Notes:

ft considered = 1 (T°C < 60°C);  
if T°C > 60°C, multiply NS by 1.5; for the same number of meals, the Nominal Size is inversely proportional to the diary activity duration.

## 2.3 - Selection table for grease separators with sludge trap

Restaurant <sup>(2)</sup>			Hospital	Establishment professional cooking	Canteen (no food preparation)	Agri-food industry and Specific industrial applications	NS	Grease separator with sludge trap			
Number of meals								Polyethylene		Stainless steel	
1 service	2 services	Hotel and restaurant	Number of meals / day			Without discharge column	With discharge column	Without discharge column	With discharge column		
≤ 52	≤ 104	≤ 89	≤ 148	≤ 101	≤ 222	Ask us	1	YG0500E	YG1000E	BDG01I	BDGA01I
≤ 78	≤ 156	≤ 133	≤ 222	≤ 151	≤ 332		1,5	YG0501E	YG1001E	BDG01I	BDGA01I
≤ 104	≤ 209	≤ 177	≤ 295	≤ 201	≤ 443		2	YG0502E	YG1002E	BDG02I	BDGA02I
≤ 156	≤ 313	≤ 266	≤ 443	≤ 302	≤ 665		3	YG0503E	YG1003E	BDG03I	BDGA03I
≤ 209	≤ 417	≤ 354	≤ 591	≤ 403	≤ 886		4	YG0504E	YG1004E	BDG04I	BDGA04I
≤ 261	≤ 521	≤ 443	≤ 738	≤ 503	≤ 1108		5	YG0505E	YG1005E	BDG06I	BDGA06I
≤ 313	≤ 626	≤ 532	≤ 886	≤ 604	≤ 1329		6	YG0506E	YG1006E	BDG06I	BDGA06I
≤ 417	≤ 834	≤ 709	≤ 1182	≤ 806	≤ 1772		8	EG0508C	EG1008C	BDG08I	BDGA08I
≤ 521	≤ 1043	≤ 886	≤ 1477	≤ 1007	≤ 2215		10	EG0510C	EG1010C	BDG10I	BDGA10I
≤ 626	≤ 1251	≤ 1063	≤ 1772	≤ 1208	≤ 2658		12	EG0512C	EG1012C	-	-
≤ 782	≤ 1564	≤ 1329	≤ 2215	≤ 1510	≤ 3323		15	-	-	BDG15I	BDGA15I
≤ 834	≤ 1668	≤ 1418	≤ 2363	≤ 1611	≤ 3545		16	-	-		
≤ 1043	≤ 2085	≤ 1772	≤ 2954	≤ 2014	≤ 4431		20	DG20E	DGA20E		
≤ 1564	≤ 3128	≤ 2658	≤ 4431	≤ 3021	≤ 6646		30	DG30E	DGA30E		
≤ 2085	≤ 4170	≤ 3545	≤ 5908	≤ 4028	≤ 8862		40	DG40E	DGA40E		

For any other use ask our design office



# Grease and/or starch separators: What size to choose?

## 2.4 - Selection table for grease and starch separators

Restaurant <sup>(1)</sup>			Hospital	Establishment Large-scale kitchen	Specific industrial applications	NS	Grease and starch separator with sludge trap				
Number of meals							Number of meals / day	Polyethylene		Stainless steel	
1 service	2 services	Hotel and restaurant						Without discharge column	With discharge column	Without discharge column	With discharge column
≤ 52	≤ 104	≤ 89	≤ 148	≤ 101	Ask us	1	YG2000E	YG2500E	BDG011 + OSF010	BDGA011 + OSF010	
≤ 78	≤ 156	≤ 133	≤ 222	≤ 151		1,5	YG2002E	YG2502E	BDG021 + OSF010	BDGA021 + OSF010	
≤ 104	≤ 209	≤ 177	≤ 295	≤ 201		2	YG2002E	YG2502E	BDG031 + OSF010	BDGA031 + OSF010	
≤ 156	≤ 313	≤ 266	≤ 443	≤ 302		3	YG2003E	YG2503E	BDG041 + OSF010	BDGA041 + OSF010	
≤ 261	≤ 521	≤ 443	≤ 738	≤ 503		5	YG2005E	YG2505E	BDG061 + OSF010	BDGA061 + OSF010	
≤ 313	≤ 626	≤ 532	≤ 886	≤ 604		6	EG2006C	EG2506C			
≤ 365	≤ 730	≤ 620	≤ 1034	≤ 705		7	EG2007C	EG2507C	BDG081 + OSF010	BDGA081 + OSF010	
≤ 417	≤ 834	≤ 709	≤ 1182	≤ 806		8	EG2008C	EG2508C	BDG101 + OSF010	BDGA101 + OSF010	
≤ 521	≤ 1043	≤ 886	≤ 1477	≤ 1007		10	EG2010C	EG2510C	BDG151 + OSF010	BDGA151 + OSF010	
≤ 782	≤ 1564	≤ 1329	≤ 2215	≤ 1510		15	GF15E	GFA15E			

(1) For a **restaurant**, there are 2 possibilities: 1 or 2 services / day.

## 3 - Selection table for starch separators

The choice of a starch separator depends on the number of meals served per day or on the quantity of potatoes processed by the machine per day.

Number of meals/day	Mass of potatoes/day	Size	Starch separator	
			Without discharge column	With discharge column
≤ 400	80 kg	1	YG3000E	YG3500E
≤ 1000	200 kg	2	YG3002E	YG3502E
≤ 2500	500 kg	3	YG3003E	YG3503E
≤ 3000	600 kg	4	YG3004E	YG3504E
≤ 6000	1200 kg	5	EG3005C	EG3505C
≤ 7500	1500 kg	6	EG3006C	EG3506C

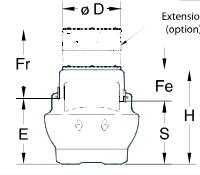
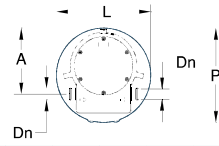


# Grease separators with sludge trap

- Recyclable polyethylene tank produced by rotomoulding.
- PVC inlet and outlet or nitrile seals.
- Sludge trap which retains heavy material
- Polyethylene cover for pedestrian traffic, closed by stainless steel screws (with seal)

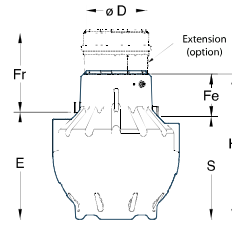
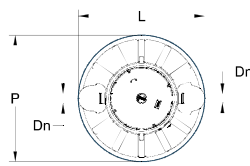
### OPTIONS

- Cover extension see p. 82
- Visual and audible grease alarm see p. 83



Reinforced model also available

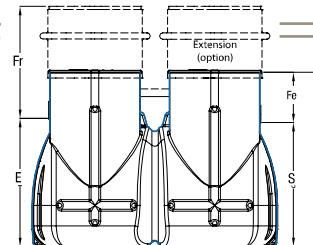
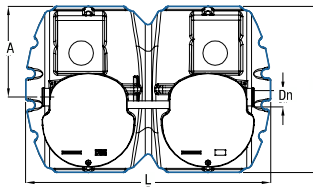
References	Nominal size	P	L	H	E	S	Fe	Dn	A	Weight	Useful volume		ø D	Optional extensions			
											Sludge trap	Separator		Ref.	Fr (Ht. fixed)	Ref.	Fr (Ht. fixed)
YG0500E	1	1000	1000	1000	698	668	332	110	700	27	100	240	620	PLA13555G*	502	PLA13556G*	702



\*fixed extension (non telescopic)

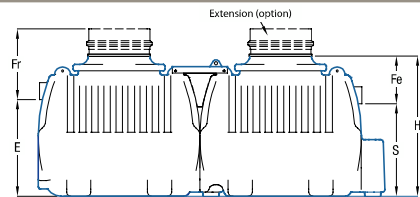
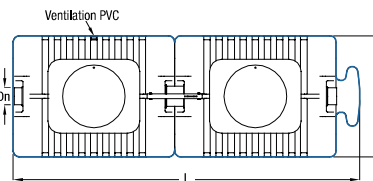
Reinforced model also available

References	Nominal size	P	L	H	E	S	Fe	Dn	Weight	Useful volume		ø D	Optional extensions			
										Sludge trap	Separator		Ref.	Fr (fixed) or (mini /maxi)	Ref.	Fr (fixed) or (mini /maxi)
YG0501E	1,5	1200	1200	1230	880	830	400	110	37	150	510	620		550		750
YG0502E	2	1200	1200	1230	930	880	350	110	37	200	490	620	PLA13555G*	500	PLA13556G*	700
YG0503E	3	1200	1200	1540	1240	1190	350	110	52	300	730	620		500		700
YG0504E	4	1500	1500	1700	1275	1225	475	110	69	400	1100	770		675/875		855/1025
YG0505E	5	1500	1500	1700	1475	1425	275	160	72	500	1200	770	ETR47EF	475/675	ETR65EF	655/825
YG0506E	6	1500	1500	1965	1705	1655	310	160	95	600	1440	770		510/710		690/860



## Ellipse

References	Nominal size	L	P	H	E	S	Fe	Dn	A	Useful volume		Weight	Optional extensions (x 2 units)			
										Sludge trap	Separator		Ht 700	Fr mini /maxi	Ht 1000	Fr mini /maxi
EGO508C	8	2400	1624	1700	1250	1210	490	160	887	800	2460	232		850/1150		900/1500
EGO510C	10	2400	1624	2072	1622	1582	490	160	887	1000	3090	254	RE207	850/1150	RE210	900/1500
EGO512C	12	2450	1700	2072	1532	1492	580	200	457	1200	2890	264		850/1150		900/1590



## Aronde

References	Nominal size	L	P	H	E	S	Fe	Dn	Useful volume		Weight	Optional extensions (x 2 units)			
									Sludge trap	Separator		Ht 250 to 450mm	Fr mini maxi	Ht 430 to 600mm	Fr mini maxi
DG20E	20	4292	1500	1730	1140	1070	660	200	2000	4800	318	ETR47ET	840 1040	ETR65ET	1020 1190

Dimensions are given in mm, weights in kg, volumes in litres.



# Grease separators with sludge trap



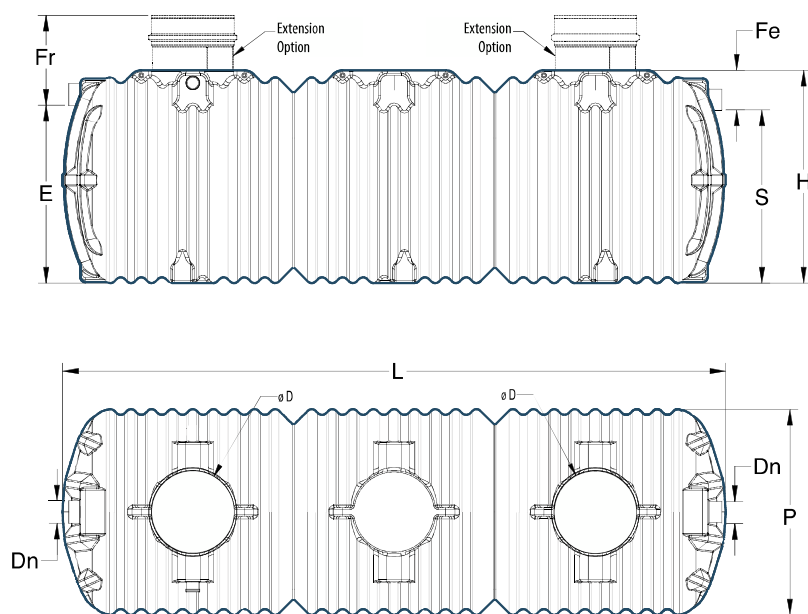
Nominal size  
30 - 40

- Polyethylene **tank** produced by rotomoulding
- **Operation:** retains sludge and grease contained in kitchen wastewater and thus prevents sewer pipes clogging.
- **Sludge trap** which retains heavy material
- PVC sleeve or nitrile seals **inlet/outlet**
- Polyethylene **cover** for pedestrian traffic, with quarter-turn closure and security screws

### OPTIONS

- **Cover extension** see p. 82
- **Visual and audible grease alarm** see p. 83

DG



Ref Range DG	Nominal size	L	P	H	E	S	Fe	Dn	Volume		Weight	Optional extensions (2 units)			
									Sludge trap	Separator		Ht 250 to 450mm	Fr mini / maxi	Ht 430 to 600mm	Fr mini / maxi
DG30E	30	4364	1943	2010	1640	1570	440	250	3000	7200	476	ETR47ET	1890 2090	ETR65ET	2070 2240
DG40E	40	6265							4000	10040	665				

Dimensions are given in mm, weight in kg, volume in litres



# Grease separators with sludge trap

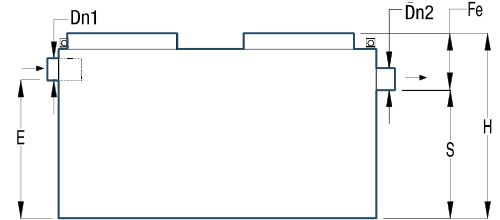
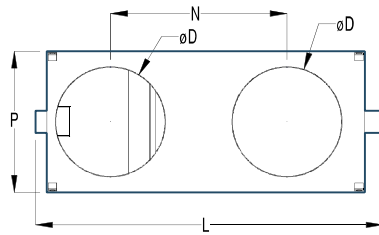
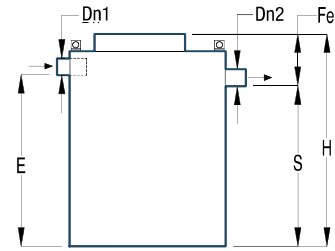
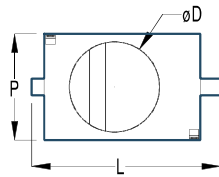


Nominal size  
1 - 15

- 304L stainless steel **tank**
- **Operation:** retains sludge and grease contained in the wastewater from restaurants, large-scale kitchens or food processing plants.
- **Sludge trap** which retains heavy material
- PVC sleeve or nitrile seals inlet/outlet
- **1 or 2 manholes according to the model**, for installation under castings, diameter 600 or 800 mm.

### OPTIONS

- **304L stainless steel cover** see p. 85
- **Visual and audible grease alarm** see p. 83



BDG

Ref Range BDG	Nominal size	L	P	H	E	S	Fe	Dn1 inlet	Dn2 outlet	Volume		Weight	øD	Optional extensions
										Sludge trap	Separator			
BDG01I	01	1210	680	850	590	520	330	100	100	100	240	110	580	1
BDG02I	02	1210	680	1360	1100	1030	330	100	100	200	480	161	580	
BDG03I	03	1690	680	1360	1100	1030	330	100	100	300	720	202	580	
BDG04I	04	1690	750	1570	1310	1240	330	100	100	400	960	315	580	2
BDG06I	06	2190	1000	1450	1120	1050	400	150	150	600	1440	420	780	
BDG08I	08	2190	1000	1810	1480	1410	400	150	150	800	1920	510	780	
BDG10I	10	2190	1200	1910	1530	1460	450	200	200	1000	2400	605	780	
BDG15I	15	2360	1480	2110	1730	1660	450	200	200	1500	3600	780	780	

Dimensions are given in mm, weight in kg, volume in litres





# Grease separators with sludge trap and discharge column



- Recyclable polyethylene **tank** produced by rotomoulding
- PVC inlet and outlet or nitrile seals
- **Sludge trap** which retains heavy material
- **Discharge column(s)** DN 80

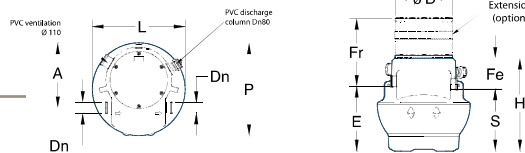
- with symmetric coupling
- Polyethylene **cover** for pedestrian traffic, closed by stainless screws (with seal)
- PVC **vent** DN 110



**OPTIONS**

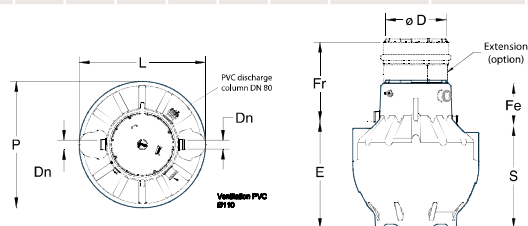
- **Cover extension** see p. 82
- **Visual and audible grease alarm** see p. 83

**Reinforced model also available**



References	Nominal size	P	L	H	E	S	Fe	Dn	A	Weight	Useful volume		Ø D	Optional extensions			
											Sludge trap	Separator		Ref.	Fr (Ht. fixed)	Ref.	Fr (Ht. fixed)
YG1000E	1	1000	1000	1000	698	668	332	110	700	33	100	240	620	PLA13556G*	502	PLA13556G*	702

TechneauSphère

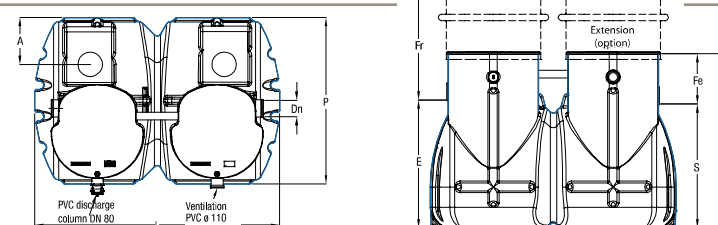


**Reinforced model also available**

\*Fixed extension (non telescopic)

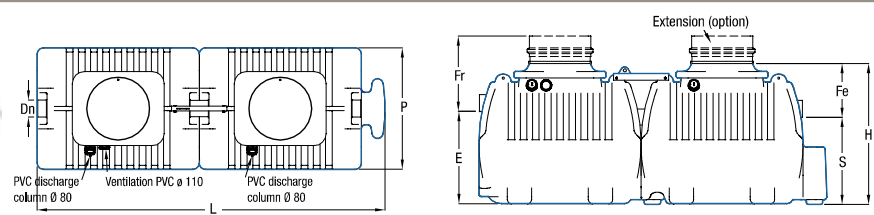
References	Nominal size	P	L	H	E	S	Fe	Dn	Weight	Useful volume		Ø D	Optional extensions			
										Sludge trap	Separator		Ref.	Fr (fixed) or (mini /maxi)	Ref.	Fr (fixed) or (mini /maxi)
YG1001E	1,5	1200	1200	1230	880	830	400	110	43	150	510	620		550		750
YG1002E	2	1200	1200	1230	930	880	350	110	53	200	490	620	PLA13556G*	500	PLA13556G*	700
YG1003E	3	1200	1200	1540	1240	1190	350	110	59	300	730	620		500		700
YG1004E	4	1500	1500	1700	1275	1225	475	110	76	400	1100	770		675/875		855/1025
YG1005E	5	1500	1500	1700	1475	1425	275	160	79	500	1200	770	ETR47EF	475/675	ETR65EF	655/825
YG1006E	6	1500	1500	1965	1705	1655	310	160	102	600	1440	770		510/710		690/860

Ellipse



References	Nominal size	L	P	H	E	S	Fe	Dn	A	Useful volume		Weight	Optional extensions (x 2 units)			
										Sludge trap	Separator		Ht 700	Fr mini /maxi	Ht 1000	Fr mini /maxi
EG1008C	8	2400	1624	1700	1250	1210	490	160	887	800	2460	237		850/1150		900/1500
EG1010C	10	2400	1624	2072	1622	1582	490	160	887	1000	3090	259	RE207	528/1128	RE210	900/1500
EG1012C	12	2450	1700	2072	1532	1492	580	200	457	1200	2890	269		618/1218		990/1590

Aronde



References	Nominal size	L	P	H	E	S	Fe	Dn	Useful volume		Weight	Optional extensions (x 2 units)			
									Sludge trap	Separator		Ht 250 to 450mm	Fr mini maxi	Ht 430 to 600mm	Fr mini maxi
DGA20E	20	4292	1500	1730	1140	1070	660	200	2000	4800	318	ETR47ET	840/1040	ETR65ET	1020/1190

Dimensions are given in mm, weight in kg, volume in litres

Grease separators



# Grease separators with sludge trap and discharge column



Nominal size

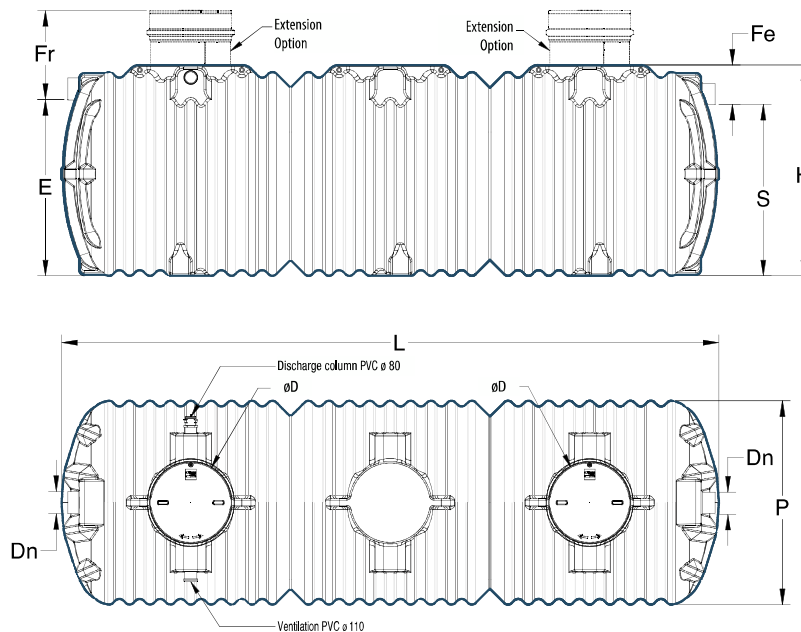
30 or 40

- Recyclable polyethylene **tank** produced by rotomoulding with hoisting rings and tie downs
- **Operation:** retains sludge and grease contained in kitchen wastewater and thus prevents sewer pipes clogging.
- **Sludge trap** which retains heavy material
- **Grease inlet and outlet** (PVC with nitrile seals)
- **2 polyethylene covers** for pedestrian traffic, with quarter-turn closure and security screws
- **Emptying column** DN 80 with symmetric coupling
- PVC **vent** DN 110



## OPTIONS

- **Cover extension** see p. 82
- **Visual and audible grease alarm** see p. 83



Ref Range DGA	Nominal size	øD	L	P	H	E	S	Fe	Dn	Volume		Weight	Optional extensions			
										Sludge trap	Separator		Ht: 250 to 450mm	Fr mini maxi	Ht: 430 to 600mm	Fr mini maxi
DGA30E	30	780	4364	1943	2010	1640	1570	440	250	3000	7200	482	ETR47ET	1890 2090	ETR65ET	2070 2240
DGA40E	40		6265							4000	10040					

Dimensions are given in mm, weight in kg, volume in litres

Nominal size  
1 - 15

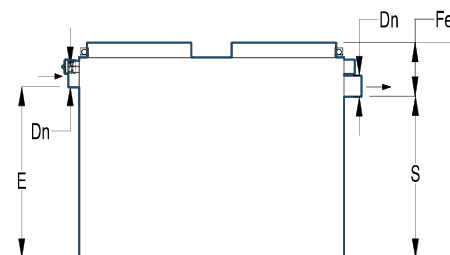
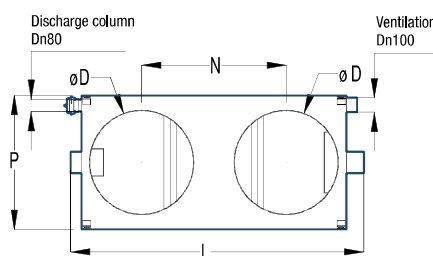
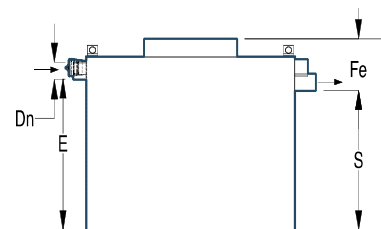
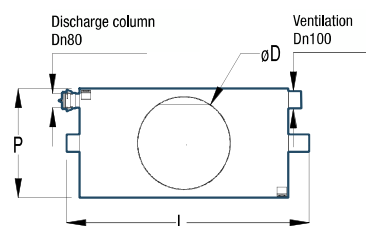
## OPTIONS

- **Stainless steel cover** see p. 85
- **Visual and audible grease alarm** see p. 83

# Grease separators with sludge trap and emptying column

- 304L stainless steel **tank**
- **Operation:** retains sludge and grease contained in the wastewater from restaurants, large-scale kitchens or food processing plants.
- **Sludge trap** which retains heavy material
- **1 or 2 manholes according to the model**, for installation under castings, diameter 600 or 800 mm.
- Stainless steel **emptying column** 80 with symmetric coupling.
- Stainless steel **vent** DN 100

BDGA



Ref Range BDGA	Nominal size	øD	L	P	H	E	S	N	Fe	Dn Inlet/outlet	Volume		Weight
											Sludge trap	Separator	
BDGA01I	01	580	1260	640	890	640	570	-	320	100	100	240	105
BDGA02I	02	580	1510	680	1190	940	870	-	320	100	200	480	157
BDGA03I	03	580	1310	880	1510	1260	1190	-	320	100	300	720	196
BDGA04I	04	580	1690	1000	1410	1160	1090	780	320	100	400	960	242
BDGA06I	06	780	2190	1000	1610	1280	1210	1080	400	150	600	1440	430
BDGA08I	08	780	2190	1000	1960	1630	1560	1080	400	150	800	1920	500
BDGA10I	10	780	2960	1250	1610	1230	1160	1550	450	200	1000	2400	634
BDGA15I	15	780	2590	1600	2070	1680	1620	1180	450	200	1500	3600	784

Dimensions are given in mm, weight in kg, volume in litres



# Grease separators without sludge trap

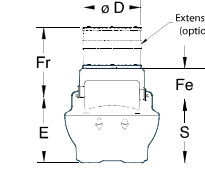
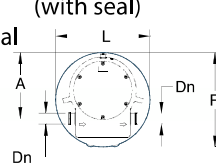


Nominal size  
1 - 28

- Recyclable polyethylene tank produced by rotomoulding.
- PVC inlet and outlet or nitrile seals.
- Sludge trap which retains heavy material
- Polyethylene cover for pedestrian traffic, closed by stainless steel screws (with seal)

**OPTIONS**

- Cover extension see p. 82
- Visual and audible grease alarm see p. 83

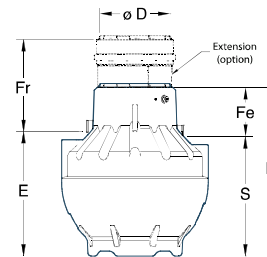
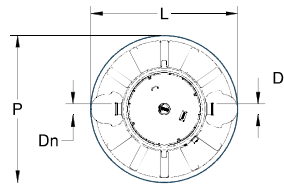


Reinforced model also available

References	Nominal size	P	L	H	E	S	Fe	Dn	A	Weight	Useful volume Separator	ø D	Optional extensions			
													Ref.	Fr (Ht. fixed)	Ref.	Fr (Ht. fixed)
YG1501E	1	1000	1000	1000	698	668	332	110	700	27	340	620	PLA13556G*	502	PLA13556G*	702

\*fixed extension (non telescopic)

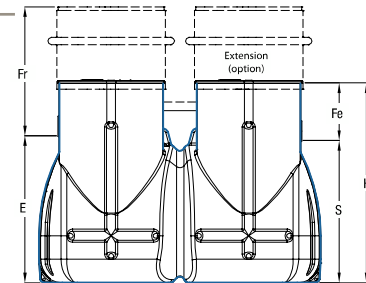
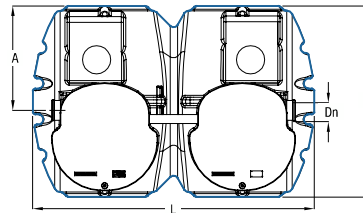
## TechnauSphère



Reinforced model also available

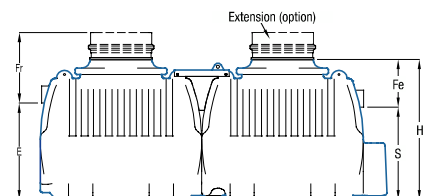
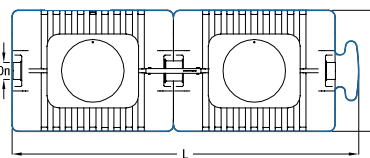
References	Nominal size	P	L	H	E	S	Fe	Dn	Weight	Useful volume Separator	ø D	Optional extensions			
												Ref.	Fr (fixed) or (mini/maxi)	Ref.	Fr (fixed) or (mini/maxi)
YG1503E	3	1200	1200	1230	930	880	350	110	37	720	620	PLA13556G*	500	PLA13556G*	700
YG1504E	4	1200	1200	1540	1240	1190	350	110	52	1030	620	PLA13556G*	500	PLA13556G*	700
YG1506E	6	1500	1500	1700	1275	1225	475	160	71	1500	770	ETR47EF	675/875	ETR65EF	855/1025
YG1508E	8	1500	1500	1965	1705	1655	310	160	95	2040	770	ETR47EF	510/710	ETR65EF	690/860

## Ellipse



References	Nominal size	L	P	H	E	S	Fe	Dn	A	Useful volume Separator	Weight	Optional extensions (x 2 units)			
												Ht 700	Fr mini /maxi	Ht 1000	Fr mini /maxi
EG1512C	12	2400	1624	1700	1160	1120	580	200	457	3360	224	RE207	940/1240	RE210	990 /1590
EG1516C	16	2450	1700	2072	1532	1492	580	200	457	4060	243	RE207	940/1240	RE210	990 /1590

## Aronde



References	Nominal size	L	P	H	E	S	Fe	Dn	Useful volume Separator	Weight	Optional extensions (x 2 units)			
											Ht 250 to 450mm	Fr mini /maxi	Ht 430 to 600mm	Fr mini /maxi
G14E	14	2292	1500	1730	1140	1070	660	160	3400	166	ETR47ET	840/1080	ETR65ET	1020/1190
G28E	28	4292	1500	1730	1140	1070	660	200	6800	318	ETR47ET	840/1080	ETR65ET	1020/1190

Dimensions are given in mm, weights in kg, volumes in litres.



# Grease separators without sludge trap



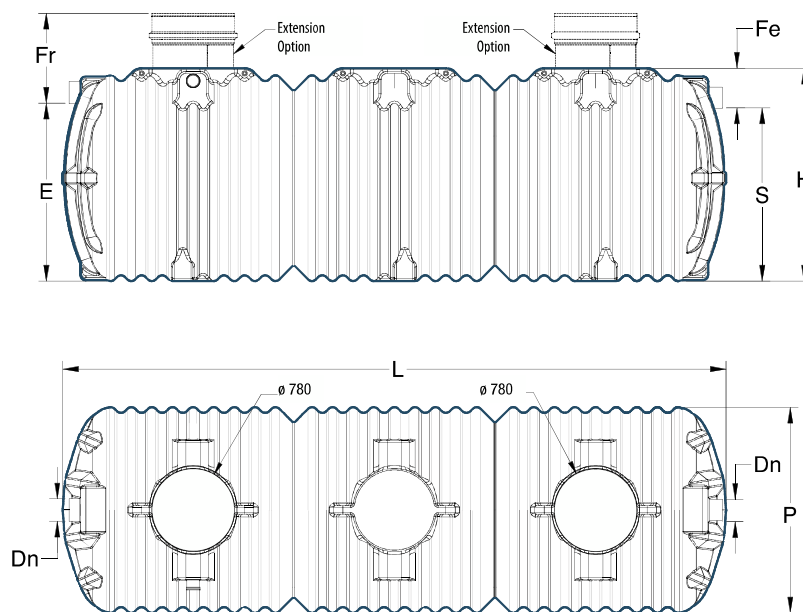
Nominal size  
40

- Recyclable polyethylene **tank** produced by rotomoulding with hoisting rings.
- **Operation:** retains sludge and grease contained in kitchen wastewater and thus prevents sewer pipes clogging.
- **Grease inlet and outlet** (PVC with nitrile seals)
- **2 polyethylene covers** for pedestrian traffic, with quarter-turn closure and security screws
- PVC **vent** DN 110

## OPTIONS

- **Cover extension** see p. 82
- **Visual and audible grease alarm** see p. 83

GE<sup>TN</sup> 40



Ref Range GE	Nominal size	L	P	H	E	S	Fe	Dn	Volume	Weight	Optional extensions (2 units)			
									Separator		Ht: 250 to 450mm	Fr mini / maxi	Ht: 430 to 600mm	Fr mini / maxi
G40E	40	4364	1943	2010	1640	1570	440	200	10200	482	ETR47ET	1890 2090	ETR65ET	2070 2240

Dimensions are given in mm, weight in kg, volume in litres



# Grease and starch separators with sludge trap and emptying column

- Recyclable polyethylene **tank** produced by rotomoulding
- PVC inlet for greases (Dn1) and outlet or nitrile seals
- **PVC sleeve (Dn2)** inlet for starch
- Brass **spray nozzle** 15/21 for foam draw-down

- **Polyethylene cover** with seal for pedestrian traffic closed with stainless steel screws.
- **Emptying column(s)** DN 80 with symmetric coupling
- PVC **vent** DN 110

## OPTIONS

- **Cover extension** see p. 82
- **Visual and audible grease alarm** see p. 83

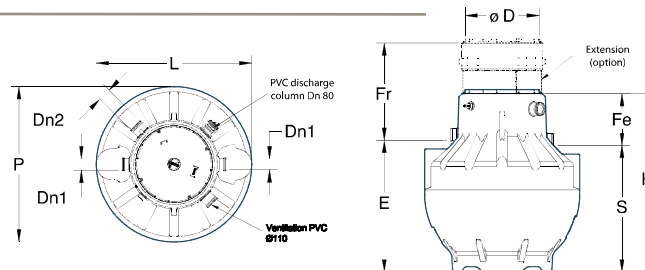


Detail of the emptying column

**Reinforced model also available**

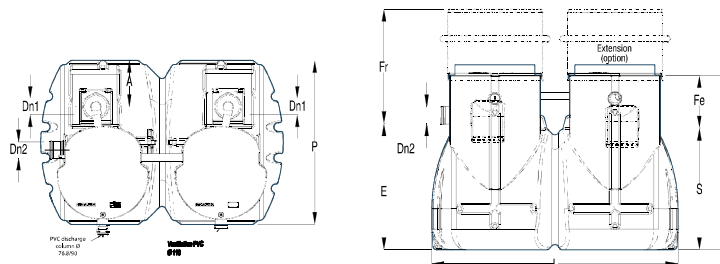
\*fixed extension (non telescopic)

TechneauSphère



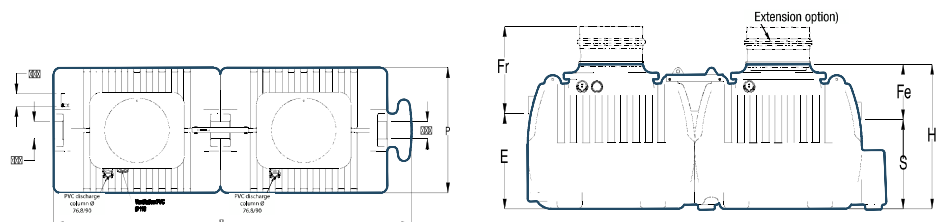
References	Nominal size	P	L	H	E	S	Fe	Dn1	Dn2	Weight	Useful volume		ø D	Optional extensions			
											Sludge trap	Separator		Ref.	Fr (fixed) or (mini / maxi)	Ref.	Fr (fixed) or (mini / maxi)
YG2500E	1	1200	1200	1230	930	880	350	110	110	44	100	560	620	PLA13555G*	500	PLA13556G*	700
YG2502E	2	1200	1200	1540	1240	1190	350	110	110	60	200	830	620		500		700
YG2503E	3	1500	1500	1700	1275	1225	475	110	110	77	300	1200	770	ETR47EF	675/875	ETR65EF	855/1025
YG2505E	5	1500	1500	1965	1705	1655	310	160	110	103	500	1540	770		510/710		690/860

Ellipse



References	Nominal size	L	P	H	E	S	Fe	Dn1	Dn2	A	Useful volume		Weight	Optional extensions			
											Sludge trap	Separator		Ref.	Fr mini / maxi	Ref.	Fr mini / maxi
EG2506C	6	2400	1624	1700	1230	1190	510	160	160	457	600	2660	239	RE207	870/1170	RE210	920/1520
EG2507C	7	2450	1700								700	2600	249				
EG2508C	8	2400	1624	2072	1602	1562	800	3290	261								
EG2510C	10	2450	1700				1000	3120	271								

Aronde



References	Nominal size	L	P	H	E	S	Fe	Dn1	Dn2	Useful volume		Weight	Optional extensions (x 2 units)			
										Sludge trap	Separator		Ht 250 to 450mm	Fr mini / maxi	Ht 430 to 600mm	Fr mini / maxi
GFA15E	15	4292	1500	1730	1140	1070	660	200	160	1500	5300	319	ETR47ET	840/1040	ETR65ET	1020/1190

Dimensions are given in mm, weights in kg, volumes in litres.



# Starch separators without emptying column

- Recyclable polyethylene **tank** produced by rotomoulding
- PVC inlet and outlet or nitrile seals
- Brass **spray nozzle** 15/21 for foam draw-down
- **Polyethylene cover** with seal for pedestrian traffic closed with stainless steel screws.
- PVC **vent** DN 110

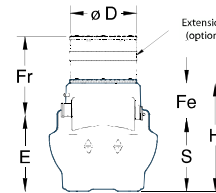
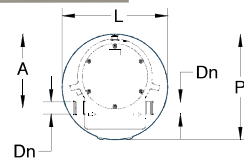
## OPTIONS

- **Cover extension** see p. 82
- **Visual and audible grease alarm** see p. 83

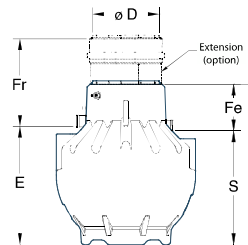
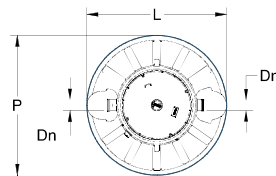
Detail of the brass spray nozzle inside the separator



Reinforced model also available



References	Nominal size	P	L	H	E	S	Fe	Dn	A	Weight	Volume		Optional extensions			
											Separator	ø D	Ref.	Fr (Ht. fixed)	Ref.	Fr (Ht. fixed)
<b>YG3000E</b>	1	1000	1000	1000	699	668	332	110	700	27	340	620	PLA13555G*	501	PLA13556G*	701

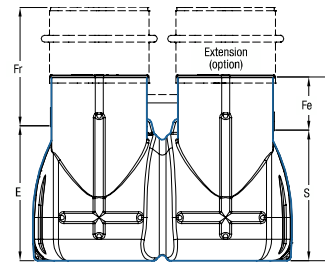
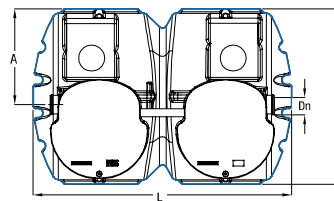


\*Fixed extension (non telescopic)

Reinforced model also available

References	Nominal size	P	L	H	E	S	Fe	Dn	Weight	Volume		Optional extensions			
										Separator	ø D	Ref.	Fr (fixed) or (mini /maxi)	Ref.	Fr (fixed) or (mini /maxi)
<b>YG3002E</b>	2	1200	1200	1230	930	880	350	110	37	660	620	PLA13555G*	500	PLA13556G*	700
<b>YG3003E</b>	3	1500	1500	1700	1275	1225	475	110	69	1500	770	ETR47EF	675/875	ETR65EF	855/1025
<b>YG3004E</b>	4	1500	1500	1965	1705	1655	310	160	93	2040	770		510/710		690/860

## TechnauSphère



References	Nominal size	L	P	H	E	S	Fe	Dn	A	Volume		Optional extensions (x 2 units)			
										Separator	Weight	Ht 700	Fr mini / maxi	Ht 1000	Fr mini / maxi
<b>EG3005C</b>	5	2400	1620	1700	1250	1210	490	160	887	3000	220	RE207	850 /1150	RE210	900 /1500
<b>EG3006C</b>	6		1624							3260					
<b>EG3008C</b>	8	2450	1700	3300	230										
<b>EG3010C</b>	10	2400	1624	2072	1622	1582	4090	239							

## Ellipse

Dimensions are given in mm, weights in kg, volumes in litres.



## Mini-Grease separators

### Under sink connection

- Recyclable polyethylene **tank** produced by rotomoulding
- PVC **Inlet / outlet socket** with nitrile seal
- Polyethylene **cover** closed with 6 screws on O ring for perfect water & air tightness

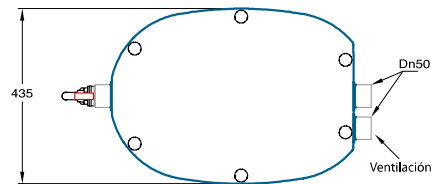
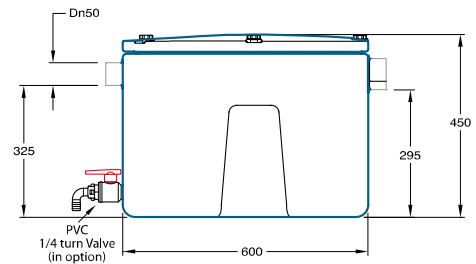
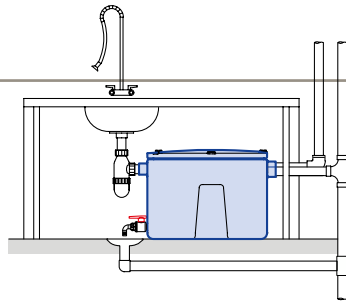
#### OPTIONS

- **PVC 1/4 turn Valve** see p. 85

- Useful volume = **55 litres**
- Maximum allowable flow rate = **0.75 l/s**
- Weight = **10 Kg**

Special for  
restaurant  
dish-washing

GM1E



Dimensions are given in mm, weights in kg, volumes in litres.



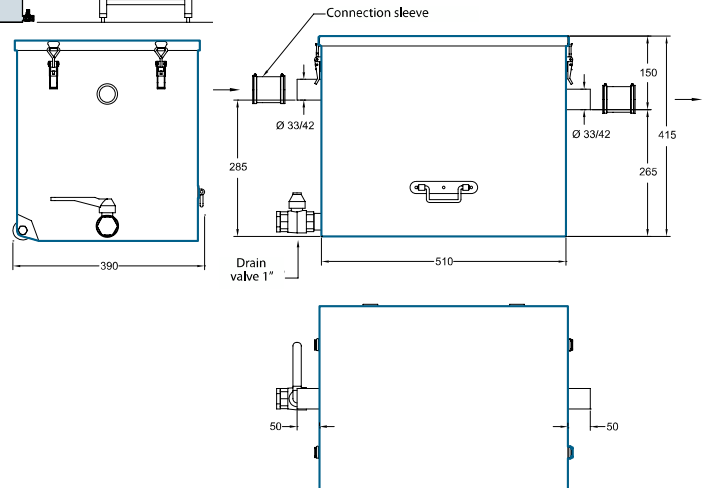
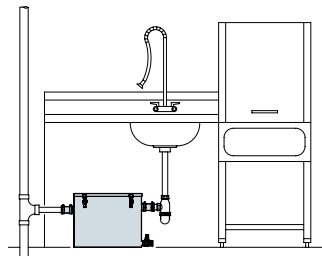
## Mini-Grease separators

### Under sink connection

- 304L stainless steel **tank**
- **Inlet / outlet** connection sleeve with nitrile seal
- **Drain valve** 1" and cap
- Lightweight **cover** equipped with 4 closing devices
- **Casters** for easier handling

- Useful volume = **55 litres**
- Maximum allowable flow rate = **0.75 l/s**
- Weight = **21 K**

Mini GR



Dimensions are given in mm, weights in kg, volumes in litres.





# Grease separators

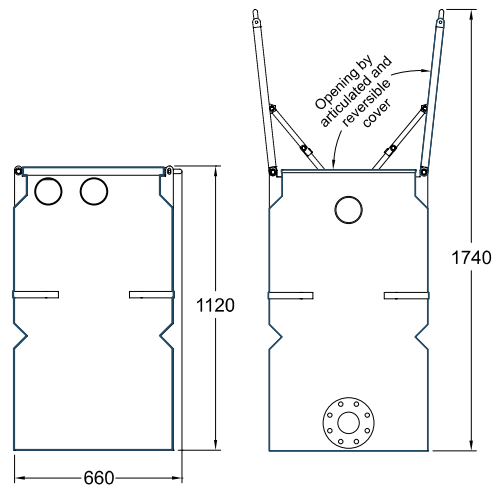
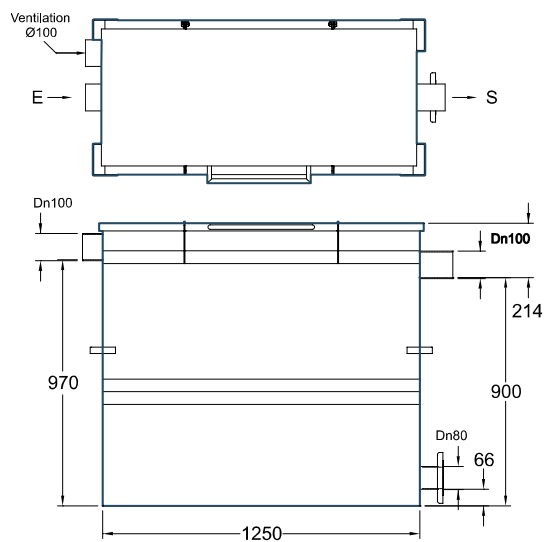
## Special above ground installation

- All stainless steel separator: non corrosive
- Compression flange in the low end DN 080 for connection to the emptying column (not included)
- Overall width 660 mm for easier passing through a door
- Large opening at 90° of the cover for easy maintenance
- Hold-open device for increased safety
- Reversible cover
- Stainless steel vent DN 100

Above-ground installation  
Basement or cellar  
of restaurants,  
large-scale kitchens



EDGS I TN 21/s



### Recommended by Techneau:

ideally suited for renovation cases as separator's size allows for an easy passing through a door

Canteen	Restaurant	
	1 service/day	2 services/day
$\leq 450$	$\leq 110$	$\leq 220$

Dimensions are given in mm, weight in kg, volume in litres